



One 37TF

High Pressure Homogenizer Technical datasheet

The One series homogenizers, compliant to EU safety rules (CE standards) and built according to EN ISO 9001:2008 Quality System, are the best fit for dairy, food & beverage applications.

Liquid end

- Engineered with a reduced number of parts for simplified use and maintenance
- High quality forged stainless steel and special high wear resistant materials for best mechanical and corrosion resistance performance
- Monoblock construction compression head
- Poppet pumping valves (PVP)

Homogenizing valve

- Wear parts in solid tungsten carbide for extended operation.
- One stage with pneumatic adjustment

from the machine's control panel

- Second homogenizing stage as option

Power end

- Cast iron power frame
- Heavy duty and reliable power frame housing the transmission elements
- AC motor drive (IE2 or equivalent)
- Forced lubrication with gear pump and low oil pressure switch
- "V" belts drive and gearbox speed reduction unit

One 37TF

High Pressure Homogenizer

Available up to 250 bar, suitable for CIP and SIP, the One TF machines are the fit for purpose solution for medium size process lines. The energy efficient solution of One range allows to reduce consumptions and optimize the running costs.

Casing

- Made of polished stainless steel
- Easy access and maintenance with removable panels
- Ventilation louvers for heat dispersion

Plungers

- Chrome coated stainless steel
- Self centering threaded connection

Tools and spare parts

- Ordinary maintenance tools and one set of emergency spare parts supplied with the machine
- O&M manual and spare part list on CD-ROM

Pump valves

- High Resistant AISI 630 alloy reversible valve seats
- Poppet type (PVP) in solenoid Stellite™

Product line connections

- DIN 11851 fittings
- Tri-Clamp™ fittings
- SMS fittings

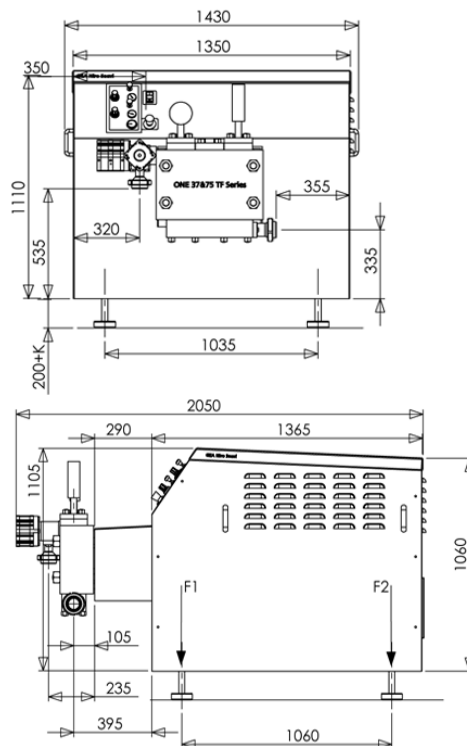
Pressure gauge

- Sanitary design analog high pressure gauge

Main options

- 2nd stage homogenizing valve
- Build in electric power board
- Inlet pressure transducer with display and low pressure alarm
- Pressure Gauge with trasmitter 4-20mA
- Inlet pulsation dampener
- Outlet pulsation dampener
- Air Solenoid valve
- Variable speed drive
- Safety valve (SLRV) with handle suitable for CIP

Dimensional drawing



Overall dimensions (mm)

Performance

Pressure (bar)	Max Flow Rate (l/h)	Pressure (bar)	Max Flow Rate (l/h)
100 – 150	8000	210	5700
150	7500	220	5500
170	7000	230	5200
180	6500	240	5000
200	6000	250	4000 – 4800

Each line refers to a different machine, which is designed for the specific maximum pressure and the specific maximum capacity.

Design features

Number of plungers	3
Stroke	70 mm
Absorbed motor power up to	37 kW
Net weight	1900 kg
Gross weight	2200 kg
Water consumption	90 l/h
Lubricating oil ISO VG 150	28 l
Gearbox oil EP 220	10.3 l

GEA Italy

GEA Mechanical Equipment Italia S.p.A.
Via A. M. Da Erba Edoari, 29
43123 Parma, Italy

Phone +39 0521 965 411
Fax +39 0521 242 819

gea.com/contact