



GBH-Series

KEEPING COOL – EVEN AT HIGH PRESSURES



GBH-Series

These brazed plate heat exchangers were specifically designed for the efficient and environmentally friendly refrigerant R410a. At pressures up to 45 bar/653 psi, the heat exchangers of the GBH-Series offer the widest variety and flexibility in terms of size, different connections, flow arrangements and accessories.

Equipped with the proven technical features such as Safety Chamber™, Delta Injection™ and Full Flow System™ heat exchangers of the GBH-Series are ideal for a variety of high-pressure applications in the fields of industry and refrigeration/air-conditioning to serve the highest customer requirements with its diversity.

Always a suitable solution at hand

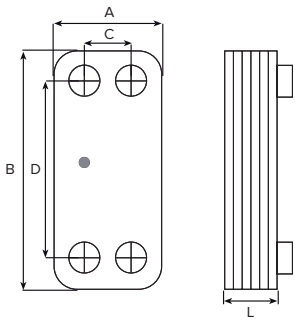
The brazed plate heat exchangers from Kelvion offer tailor-made solutions for the widest range of application. We configure the most economically favorable model for you from the wide range of available sizes and the numerous optional features. We adapt this with individually positioned connections to meet your specific requirements.

Example:

- heat pumps for heating and hot water
- evaporators in air-conditioning systems
- process cooling
- economizer
- subcoolers and condensers

Your advantages at a glance:

- high pressure resistance
- compact design
- wide range of applications
- robust construction



We need following information to select your optimum heat exchanger

- required temperature range
- flow rates or required heat load
- maximal permitted pressure drop
- required working conditions

Type	(bar)	Standard dimensions (mm)				(mm)	(kg)	(Litres/Channel)	
Plate heat exchanger	Pressure	A	B	C	D	L-Dimension N = number of plates	Mass N = number of plates	Volume	Max. number of plates
GBH 100M	45	74	204	40	170	8.00+2.23xN	0.70+0.050xN	0.025	50
GBH 200H	45	90	231	43	182	10.00+2.24xN	1.10+0.060xN	0.030	50
GBH 220H	45	90	328	43	279	10.00+2.22xN	1.30+0.080xN	0.046	50
GBH 240H	45	91	464	43	415	10.00+2.20xN	2.04+0.140xN	0.070	50
GBH 300H	45	124	173	73	120	12.30+2.22xN	1.20+0.060xN	0.030	50
GBH 400H	45	124	335	73	281	11.80+2.24xN	1.60+0.130xN	0.065	100
GBH 500H	45	124	532	73	478	9.50+2.23xN	1.76+0.210xN	0.100	100
GBH 700L/M	45	271	532	200	460	11.00+2.25xN	9.60+0.540xN	0.230	150
GBH 800H	45	271	532	161	421	13.80+2.34xN	10.00+0.540xN	0.221	260
GBH 900H	45	271	802	161	690	11.30+2.31xN	11.50+0.800xN	0.399	260
GBH 1000M/H	45	386	875	237	723	20.30+2.31xN	39.50+1.250xN	0.600	360

Also available as an advanced evaporator with a special "Delta Injection™" distribution system for the refrigerant inlet.

GBH 400H-AE	45	124	335	73	281	11.80+2.24xN	1.60+0.130xN	0.065	100
GBH 500H-AE	45	124	532	73	478	9.50+2.23xN	1.76+0.210xN	0.100	100
GBH 700M-AE	45	271	532	200	460	11.00+2.25xN	9.60+0.540xN	0.230	150
GBH 800H-AE	45	271	532	161	421	13.80+2.34xN	10.00+0.540xN	0.221	260
GBH 900H-AE	45	271	802	161	690	11.30+2.31xN	11.50+0.800xN	0.399	260
GBH 1000H-AE	45	386	875	237	723	20.30+2.31xN	39.50+1.250xN	0.600	360

GBH-Series: Specifications

- plate material: Stainless steel AISI 316L / 1.4404
- brazing material: Copper

Features

- Safety Chamber™ (model 700, 800, 900, 1000)
- Delta Injection™ (model 400, 500, 700, 800, 900, 1000H)
- Full Flow System™ (model 100, 200, 220, 240, 300, 400, 500)

Performance limits

- working temperature: -196°C to +200°C / -321°F to +392°F
- working pressure: up to 45 bar / 653 psi

Approval

- PED (CE)



The specifications contained in this brochure are intended only to serve the non-binding description of our products and services and are not subject to guarantee. Binding specifications, especially pertaining to performance data and suitability for specific operating purposes, are dependent upon the individual circumstances at the operation location and can, therefore, only be made in terms of precise requests.

Kelvion Brazed PHE GmbH
 Remsaer Straße 2a, 04603 Nobitz-Wilchwitz, Germany
 Phone +49 34 47 55 39-0
 Fax +49 34 47 55 39-30
 sales.nobitz@kelvion.com
 www.kelvion.com

Kelvion PHE GmbH
 Karl-Schiller-Straße 1-3, 31157 Sarstedt, Germany
 Phone +49 50 66 601-0
 Fax +49 50 66 601-134
 sarstedt@kelvion.com